

tultex
style fits



2014 collection

0202TC

Men's Fine Jersey Tee

100% ring-spun cotton, 30/1's fine knit jersey, tubular construction, ribbed crew taped neck and shoulders with double-needle sleeves and bottom hem. Reactive-dyed. Dischargeable, features a Tear Anywhere label. NAFTA-friendly.

weight : 4.5 oz.

sizes : XS-3XL, XXS as noted

colors : Baby Blue, Black^{XXS}, Brown^{XXS}, Cardinal, Charcoal^{XXS}, Coal, Ginger, Heather Grey^{XXS}, Indigo, Kelly, Lemon, Mint, Natural, Navy^{XXS}, Orange, Purple, Red^{XXS}, Royal^{XXS}, Sand, Silver^{XXS}, Turquoise, White^{XXS}

note: Heather Grey is 90% cotton/10%polyester



0213TC

Ladies' Fine Jersey Tee

100% ring-spun cotton, 30/1's fine knit jersey, slim fit for feminine silhouette, side-seamed, self-fabric collar, taped neck, double-needle sleeves and bottom hem. Reactive-dyed. Dischargeable, features a Tear Anywhere label. NAFTA-friendly.

weight : 4.5 oz.

sizes : XS-2XL

colors : Baby Blue, Black, Brown, Charcoal, Coal, Fuchsia, Heather Grey, Indigo, Kelly, Lemon, Mint, Natural, Navy, Orange, Pink, Purple, Red, Royal, Sand, Silver, Turquoise, White

note: Heather Grey is 90% cotton/10%polyester



0214TC

Ladies' Fine Jersey V-Neck Tee

100% ring-spun cotton, 30/1's fine knit jersey, slim fit for feminine silhouette, side-seamed, self-fabric v-neck, taped neck, double-needle sleeves and bottom hem. Reactive-dyed. Dischargeable, features a Tear Anywhere label. NAFTA-friendly.

weight : 4.5 oz.

sizes : XS-2XL

colors : Black, Charcoal, Fuchsia, Heather Grey, White

note: Heather Grey is 90% cotton/10%polyester



0245TC **NEW**

Unisex Fine Jersey
Raglan Tee

100% ring-spun cotton, 30/1's fine knit jersey, tubular construction, contrast raglan sleeves and ribbed crew neck, taped shoulders and neck with double-needle sleeves and overlock stitching on hemline, features a Tear Anywhere label.

NAFTA-friendly.

weight : 4.5 oz.

sizes : XS-3XL

colors : Black/White, Heather Grey/
Black, Heather Grey/Navy,
White/Black, White/Navy,
White/Red, White/Royal

note: Heather Grey is 90% cotton/10%polyester



Black/White	Black
Heather Grey/Black	Fuchsia
Heather Grey/Navy	Heather Grey
White/Black	Navy
White/Navy	Pink
White/Red	Red
White/Royal	White

0216TC

Misses Fine Jersey Tee

100% ring-spun cotton 30/1's fine knit jersey, fashion fit for feminine silhouette, side-seamed, feminine ribbed crew taped neck, double-needle sleeves and bottom hem. Reactive-dyed, features a Tear Anywhere label.

weight : 4.5 oz.

sizes : S-2XL

colors : Black, Fuchsia, Heather Grey, Navy, Pink, Red, White

note: Heather Grey is 90% cotton/10%polyester



0206TC

Men's Fine Jersey V-Neck Tee

100% ring-spun cotton 30/1's fine knit jersey, tubular construction, ribbed v-neck, taped neck and shoulders with double-needle sleeves and bottom hem. Reactive-dyed, dischargeable, features a Tear Anywhere label.

weight : 4.5 oz.

sizes : XS-3XL

colors : Black, White



S105TC

Unisex Fine Jersey Tank

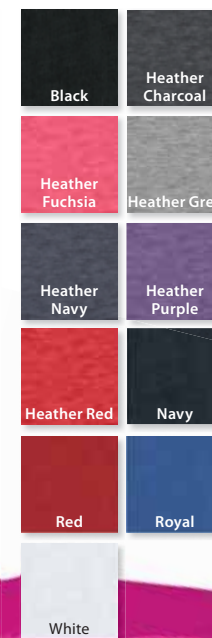
100% ring-spun cotton, 30/1's fine knit jersey, tubular construction, ribbed neckline and armholes, double-needle neck and bottom hem. Reactive-dyed. Dischargeable, features a Tear Anywhere label. NAFTA-friendly.

weight : 4.5 oz.

sizes : XS-2XL

colors : Black, Heather Grey, Navy, Red, Royal, White

note: Heather Grey is 90% cotton/10%polyester





S190TC NEW

Ladies' Racerback
Blend Tank

65% polyester/35% cotton, 30/1's fine jersey tank with racerback styling, double-needle hem and ribbed binding around neck and armholes, features a Tear Anywhere label. NAFTA-friendly.

weight : 3.2 oz.

sizes : XS-2XL

colors : Black, Heather Charcoal,
Heather Fuchsia, Heather
Navy, Heather Purple,
Heather Red, White



0240TC

Ladies' Blend Tee

65% polyester/35% cotton, 30/1's fine knit jersey, slim fit for feminine silhouette, side-seamed, self-fabric collar, taped neck, double-needle sleeves and bottom hem, features a Tear Anywhere label.

weight : 3.2 oz.

sizes : XS-2XL

colors : Black, Heather Athletic Blue, Heather Brown, Heather Charcoal, Heather Fuchsia, Heather Green, Heather Navy, Heather Orange, Heather Pink, Heather Purple, Heather Red, White



Black	Charcoal
Heather Athletic Blue	Heather Brown
Heather Charcoal	Heather Fuchsia
Heather Green	Heather Grey
Heather Navy	Heather Orange
Heather Pink	Heather Purple
Heather Red	Navy
Red	White

0241TC



Men's Blend Tee

65% polyester/35% cotton, 30/1's fine knit jersey, side-seamed, ribbed crewneck, taped neck and shoulders with double-needle sleeves and bottom hem, features a Tear Anywhere label.

weight : 3.2 oz.

sizes : XS-3XL

colors : Black, Heather Athletic Blue, Heather Brown, Heather Charcoal, Heather Green, Heather Grey, Heather Navy, Heather Orange, Heather Red, White



0207TC



Men's Blend V-Neck Tee

65% polyester/35% cotton, 40/1's fine knit jersey, side-seamed, ribbed v-neck, taped neck and shoulders with double-needle sleeves and bottom hem, features a Tear Anywhere label.

weight : 3.2 oz.

sizes : XS-3XL

colors : Black, Charcoal, Heather Grey, Navy, Red, White



0260TC

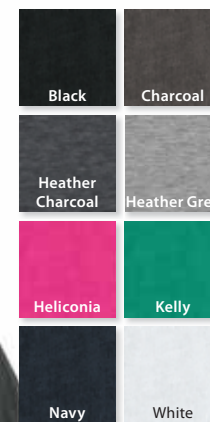
Unisex Beach Hood

60% cotton/40% polyester, 30/1's fine knit jersey hood, side-seamed, taped neck, ribbed bottom and cuff, flat drawcord, kiss zipper, features a Tear Anywhere label.

weight : 4.5 oz.

sizes : XS-3XL

colors : Black, Heather Charcoal,
Heather Grey, Heliconia,
Kelly, Navy, White



0320TC

Unisex Fleece Pullover Hood

80% ring-spun cotton/20% polyester fleece, jersey-lined hood with flat matching drawstring, muff pocket, ribbed cuffs and waistband with 5% spandex. Reactive-dyed. Dischargeable, features a Tear Anywhere label.

weight : 7.5 oz.

sizes : XS-3XL

colors : Black, Charcoal, Heather
: Grey, Navy



0331TC

Unisex Fleece Zip Hood

80% ring-spun cotton/20% polyester fleece, jersey-lined hood with matching drawstring, zip-front with split muff pocket, ribbed cuffs and waistband with 5% spandex, #5 nickel cadmium zipper. Reactive-dyed. Dischargeable, features a Tear Anywhere label.

weight : 8.0 oz.

sizes : XS-3XL

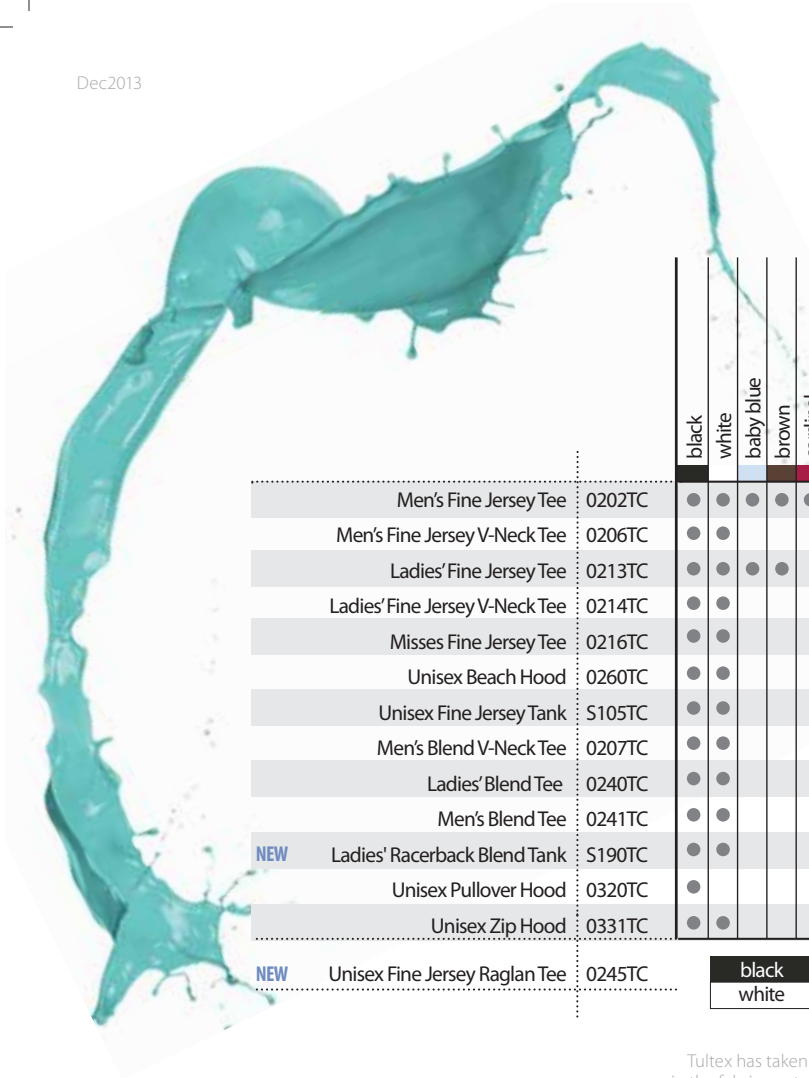
colors : Black, Charcoal, Heather
: Grey, Navy, White



Dec2013



Tultex is distributed exclusively by TSC Apparel. Visit www.tscapparel.com



		black	white	baby blue	brown	cardinal	charcoal	coal	fuchsia	ginger	heliconia	indigo	kelly	lemon	mint	natural	navy	orange	pink	purple	red	royal	sand	silver	turquoise	heatherathletic blue	heatherbrown	heathercharcoal	heatherfuchsia	heathergreen	heathergrey	heathernavy	heatherorange	heatherpink	heatherpurple	heatherred		
Men's Fine Jersey Tee	0202TC	●	●	●	●	●	●	●	●	●	●	●	●	●	●	●	●	●	●	●	●	●	●	●														
Men's Fine Jersey V-Neck Tee	0206TC	●	●																																			
Ladies' Fine Jersey Tee	0213TC	●	●	●	●		●	●				●	●	●	●	●	●	●	●	●	●	●	●	●														
Ladies' Fine Jersey V-Neck Tee	0214TC	●	●				●		●																													
Misses Fine Jersey Tee	0216TC	●	●					●									●		●																			
Unisex Beach Hood	0260TC	●	●							●			●				●										●											
Unisex Fine Jersey Tank	S105TC	●	●														●				●	●																
Men's Blend V-Neck Tee	0207TC	●	●				●										●				●																	
Ladies' Blend Tee	0240TC	●	●																							●	●	●	●	●	●	●	●	●	●	●	●	●
Men's Blend Tee	0241TC	●	●																							●	●	●	●	●	●	●	●	●	●	●	●	●
NEW Ladies' Racerback Blend Tank	S190TC	●	●																								●	●								●	●	
Unisex Pullover Hood	0320TC	●					●										●																					
Unisex Zip Hood	0331TC	●	●				●										●																					
NEW Unisex Fine Jersey Raglan Tee	0245TC	black white		htr grey black		htr grey navy		white black		white navy		white red		white royal																								

Tultex has taken care to ensure that use of DISCHARGE PRINTING techniques are acceptable on our products. Please note that variations in the fabric content may produce different results, as polyester and cotton react differently to chemical processes. Other factors that may affect results include fabric color, mechanical equipment, procedures, environment conditions, temperature setting or chemicals used. We advise that you sample the process, document the procedures and follow the guidelines of the chemical manufacturers at all times.

800.289.5400 | tultex.net